

CERTIFICATE OF LOCATION OF GOVERNMENT CORNER

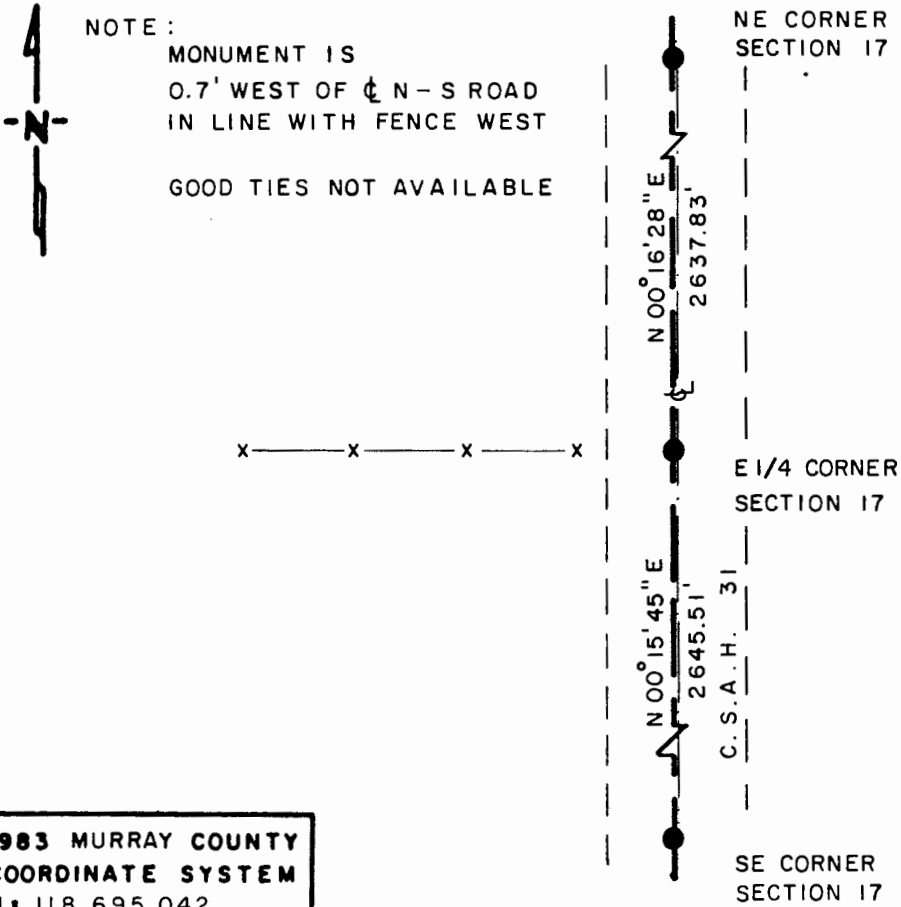
EAST QUARTER Corner of Section 17, Township 105 N, Range 41 W, 5th P.M.

STATE OF MINNESOTA, County of MURRAY

At the corner location shown on the sketch

- On 3-21-90 found a 5/8" x 10" IRON ROD, DOWN 0.1', OVER A 6" x 6" SQUARE
DATE
CONCRETE MONUMENT WITH "X" ON TOP, DOWN 20"
 - left monument as found, lowered monument, removed monument (explain)
- On 3-21-90 placed a 1 1/4" x 1 1/4" x 10" PERFORATED STEEL TUBE WITH
DATE
ALUMINUM CAP STAMPED "DNR SURVEY MARKER", OVER CONC. MONU., DOWN 0.25'

SKETCH OF REFERENCE TIES



NOTE:
 MONUMENT IS
 0.7' WEST OF ϕ N-S ROAD
 IN LINE WITH FENCE WEST

 GOOD TIES NOT AVAILABLE

1983 MURRAY COUNTY
 COORDINATE SYSTEM
 N = 118,695.042
 E = 495,412.061

BEARINGS ARE STATE PLANE

Statement of evidence relative to this corner location is on back of page

J.B.M. 4-24-90
 WMA 1488

I hereby certify that this document and the data contained herein was prepared by me or under my direct supervision.

Lowell R. Pommeroy 5-10-90
SIGNATURE DATE

Registration No. 17005
 Land Surveyor, Professional Engineer
 County Surveyor, County Engineer

OFFICE OF THE COUNTY RECORDER
 County of _____

I hereby certify that this document was filed in the Co. Recorders office at _____ M. on the _____ day of MAY 16 1990 A.D., 19 _____

County Recorder James V. Johnson
 By _____, Deputy

DOCUMENT NO. _____

East Quarter Corner of Section 17, Township 105 North, Range 41 West

The DNR Bureau of Engineering contacted the following for survey information:

Secretary of State's Office
Murray County Recorder's Office
Murray County Highway Engineer's Office
Bell Surveying, Inc., of Worthington
Madsen Land Surveying of Fairmont

- 1861 U.S. General Land Office notes obtained from the Secretary of State's Office show corner marked with a post in a mound with trench and pits as per instructions.
- 1898 Surveyor's Record Book A, page 76, obtained from the County Recorder's Office contains a survey by J. W. Woolstencroft. Survey shows a stone in a mound at corner but does not indicate if found or set.
- 1934 Surveyor's Record Book obtained from the County Highway Engineer's Office shows that a concrete stone was found at corner. The following ties are shown to corner:
R.P. tack in corner fence post, east on line 38.1 feet
R.P. tack in blazed fence post, northeast, 47.0 feet
An 18 inch concrete monument was set 3 inches below the gravel surface of a road, and 2" by 2" hubs with nails were set 100 feet west and 100 feet east in fence lines.
- 1975 Construction Plan Sheet No. 10 of 33 for County State Aid Highway 33, obtained from the County Highway Engineer's Office, shows that a concrete monument was found down 10 inches at corner. A 1/2 inch diameter rebar was set over the concrete monument in existing bituminous surface. The corner is shown:
at Station 179+14.20
in line with fences east and west
2638.09 feet from the northeast corner of Section 17
2645.99 feet from the northeast corner of Section 20
- 1976 Government Corner Tie Book obtained from the County Highway Engineer's Office shows that a concrete monument was found down 3 inches at corner. A steel pin was set over the concrete monument and the following ties were taken:
2" by 2" hubs with nails 100 feet east and 100 feet west
- 1990 March, DNR Bureau of Engineering found a 5/8 inch diameter by 10 inch long iron rod at corner. Removed the iron rod and found a 6" by 6" concrete monument with an "X" on top down 20 inches. Discarded the found iron rod and set a DNR Survey Marker over the concrete monument. Searched for but found no evidence of the record ties. The concrete monument was found to be:
0.7 of a foot west of the centerline of CSAH #33
in line with a fence west
2637.83 feet from the northeast corner of Section 17
2645.51 feet from the northeast corner of Section 20

Analysis of the above information led the DNR Bureau of Engineering to conclude that the found concrete monument marks the location of the corner.